

Papa's Missing China

Designed by Bethany Fuller

Featuring the Mojito collection by Another Point of View

Size: 38" x 38"



Cool



Warm

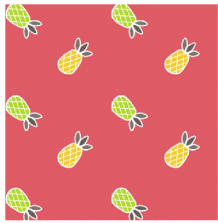
Check www.windhamfabrics.com Free Project section to see if there are any pattern updates before you start your quilt project



812 Jersey Ave ~ Jersey City, NJ 07310 ~ 201.659.0444 ~ FAX: 201.659.9719
www.windhamfabrics.com email: retail@windhamfabrics.com

Papa's Missing China

Page 2



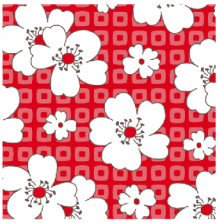
41223-1 Guava



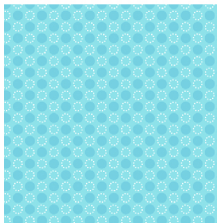
41226-1 Guava



41227-1 Guava



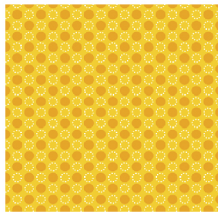
41231-1 Guava



41225-4 Sea Breeze



41226-4 Sea Breeze



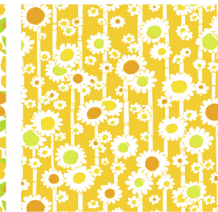
41225-2 Mango



41226-2 Mango



41227-2 Mango



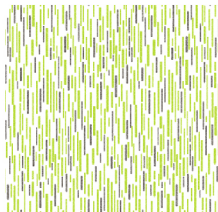
41229-2 Mango



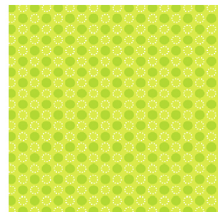
41230-2 Mango



41231-2 Mango



41224-3 Lime



41225-3 Lime



41226-3 Lime



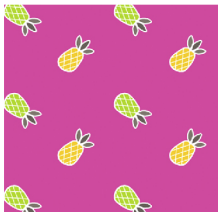
41228-3 Lime



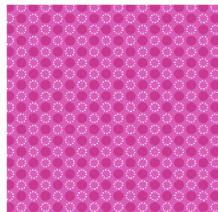
41230-3 Lime



41231-3 Lime



41223-5 Raspberry



41225-5 Raspberry



41226-5 Raspberry



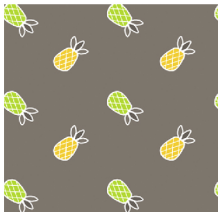
41227-5 Raspberry



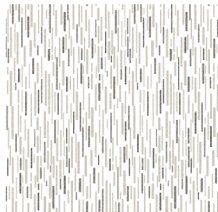
41230-5 Raspberry



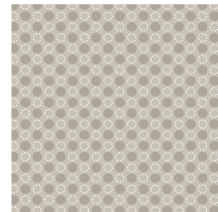
41231-5 Raspberry



41223-6 Mist



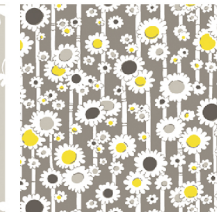
41224-6 Mist



41225-6 Mist



41226-6 Mist



41229-6 Mist



41231-6 Mist



41228-4 Sea Breeze

41230-4 Sea Breeze

41231-4 Sea Breeze



WINDHAM FABRICS

Papa's Missing China

Page 3

Fabric Requirements – Warm

Fat 1/8s each of 20 fabrics

41223-1,6

41224-3,6

41225-2,3

41226-1,2,3,6

41227-1,2

41229-2,6

41230-2,3

41231-1,2,3,6

3/4 yd solid white

1/6 yd 41225-6 for block center

1/8 yd 41224-3 for Inner Border

5/8 yd 41231-6 for Outer Border

1/3 yd 41225-3 for Binding

1 1/4 yds Backing

Fabric Requirements – Cool

1/8 yd of each of 20 fabrics

41223-5,6

41224-3,6

41225-3,4,5

41226-3,4,5,6

41227-5

41228-3,4

41230-3,4,5

41231-3,4,5

3/4 yd solid white

1/6 yd 41225-6 for block center

1/8 yd 41224-4 for Inner Border

5/8 yd 41231-6 for Outer Border

1/3 yd 41225-4 for Binding

1 1/4 yds backing

Cutting Instructions

From each of the 20 - 1/8 yd fabrics, cut one piece 8" tall.

From this piece cut one fan blade using your Easy Dresden tool.

From the remaining fabric, cut a total of 52 – 2 1/2" squares for pieced border.

From the block center fabric, make one full circle for center and 4 quarter circles for border corners.

Use provided templates.



WINDHAM FABRICS

Papa's Missing China

Page 4

From the background fabric, cut 1 – 24 ½” square for quilt center.
Also cut 4 – 4 ½” squares for border corner backgrounds.

From 2 oranges, 2 greens and 1 red, cut 4 blocks worth of fan blades. Your blades will be cut from a 2” piece. Cut and make 4 blades from each color.

From the inner border fabric cut 4 – 1 ½” strips.

From the outer border fabric cut 4 - 4 ½” strips.

From the binding fabric cut 4 – 2 ½” strips.

Piecing Instructions

Using the instructions on your Easy Dresden ruler, make 20 blades.

Sew them together into a full “plate”, back-stitching at the beginning and end of the seams to hold them together. Press seams open.

Center on the 24 ½” square of background fabric and pin well. Machine or hand applique your plate in place.

Applique circle over center of block.

Sew 2 ½” squares into 2 rows of 14 and 2 rows of 12. Sew to quilt center.

Measure well and cut 2 inner borders to the size of your quilt. It should be approximately 28 ½” square at this point. Sew to quilt, press away from center. Measure again including these borders and cut 2 remaining inner borders to this size. These should be approximately 30 ½”.

Make 4 corner fan blocks, using 5 blades for each block. Arrange them in the same order in each block. Applique fans down and then applique quarter circles over corners.

Cut 4 outer border strips to the size of your quilt. This should be approximately 30 ½”. Sew borders and corner blocks to quilt center.

Quilt as desired, bind and enjoy!

**Always look on our website before starting your project to see
if there are any updates or corrections**

**Be sure to visit www.windhamfabrics.com to see the complete collection
and to download other Free Projects**

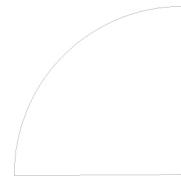


WINDHAM FABRICS

Papa's Missing China

Page 5

These templates DO NOT include seam allowances. The circle should measure 4" across and the quarter circle should measure 7/8" across.



WINDHAM FABRICS